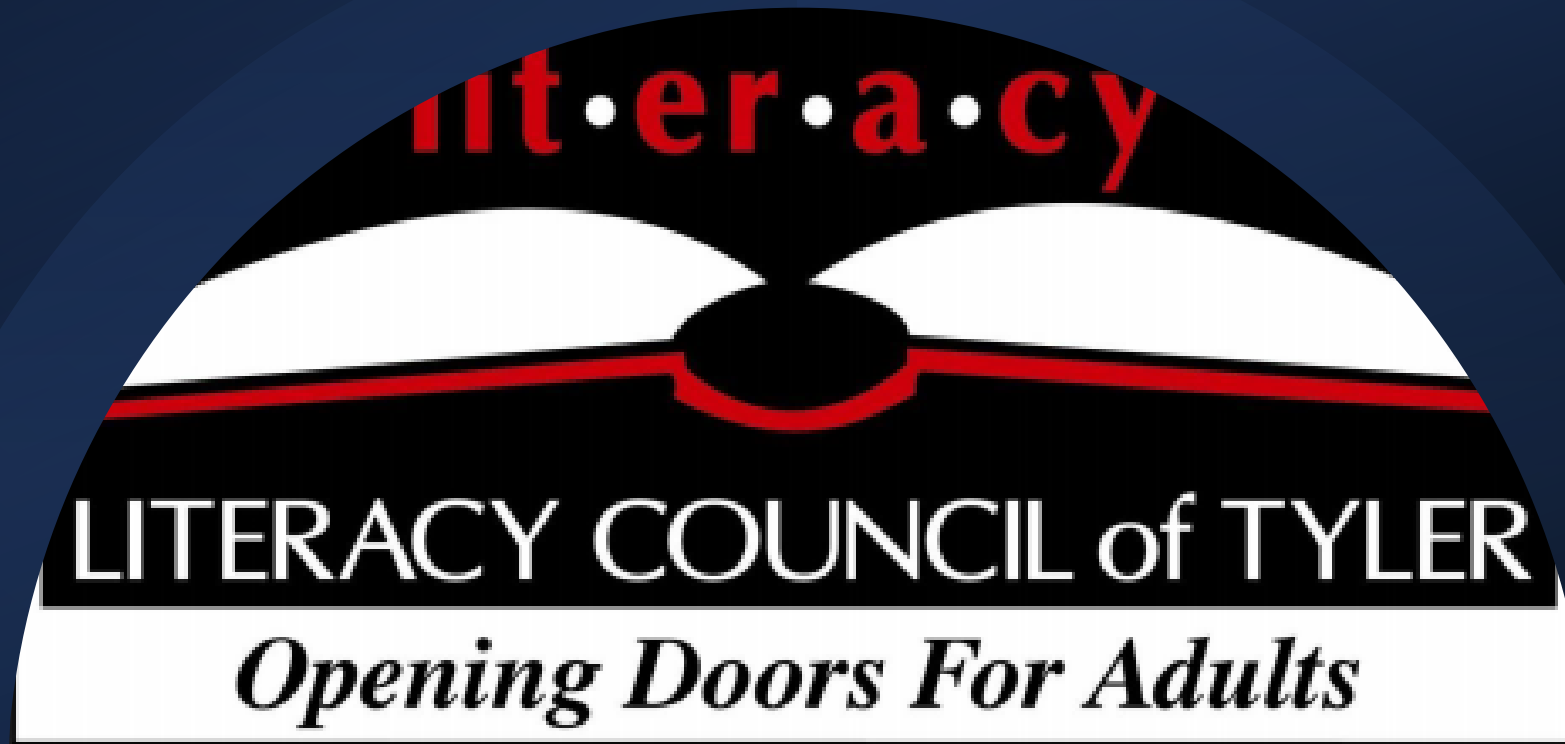


Not Just ESL...Let it Go!

English Language Services Academy



ELSA Who?

English

Language

Services

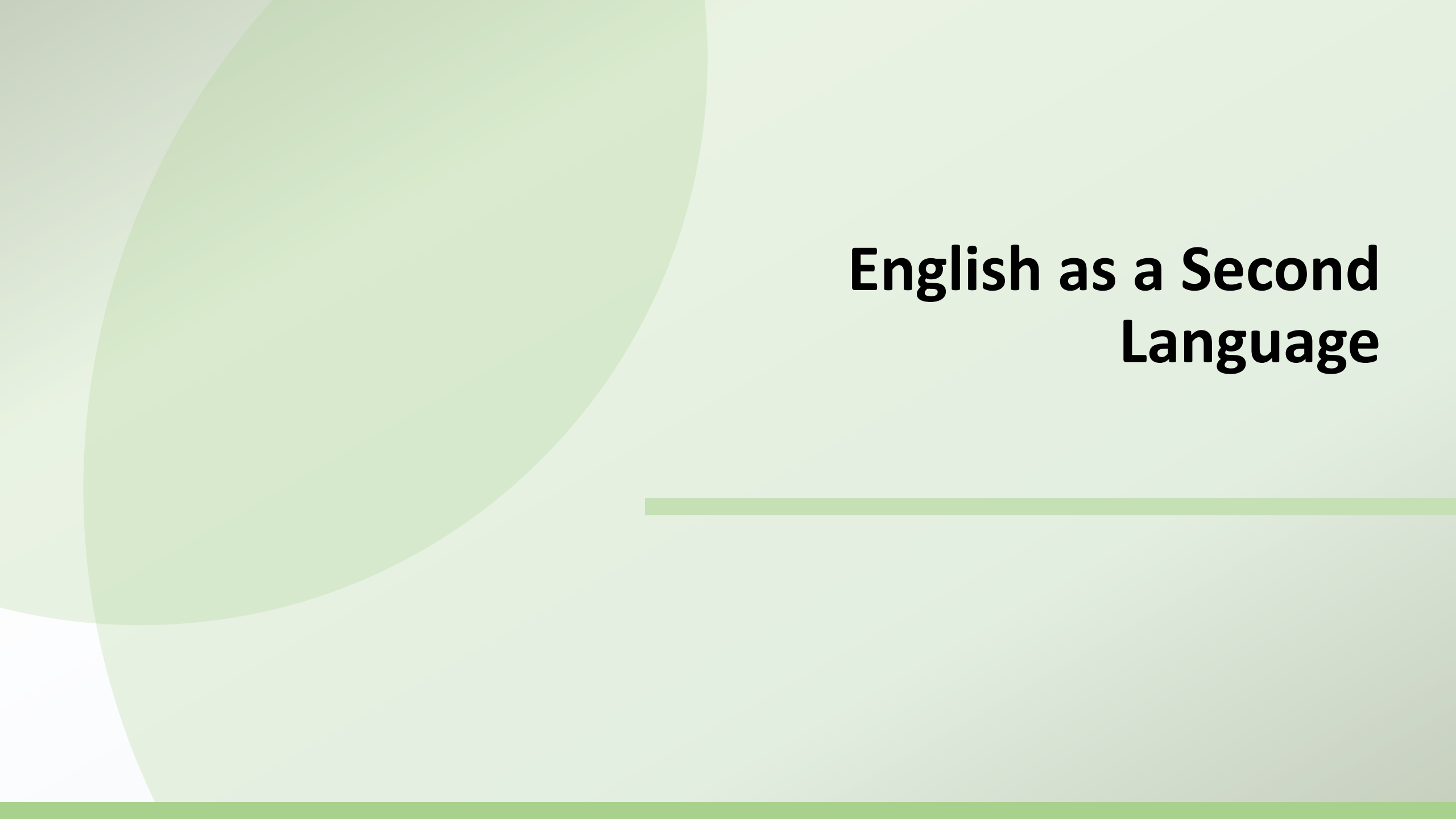
Academy

Areas of Service under ELSA

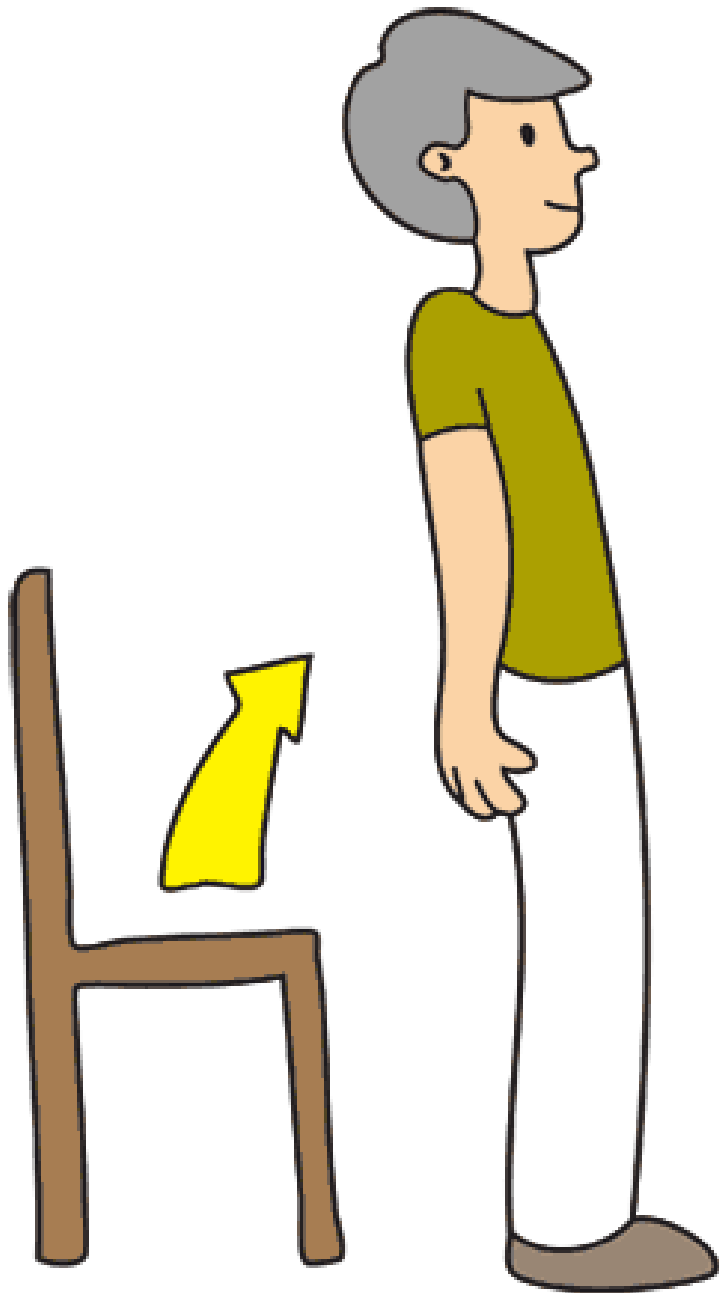
- ✓ ESL & Family Literacy
- ✓ Citizenship
- ✓ English for Spanish GED
- ✓ Business Entrepreneurship

ELSA Road Map

1. Enrollment
2. Meeting with student advisor
3. Course one (12hrs)
4. Placed in a classroom



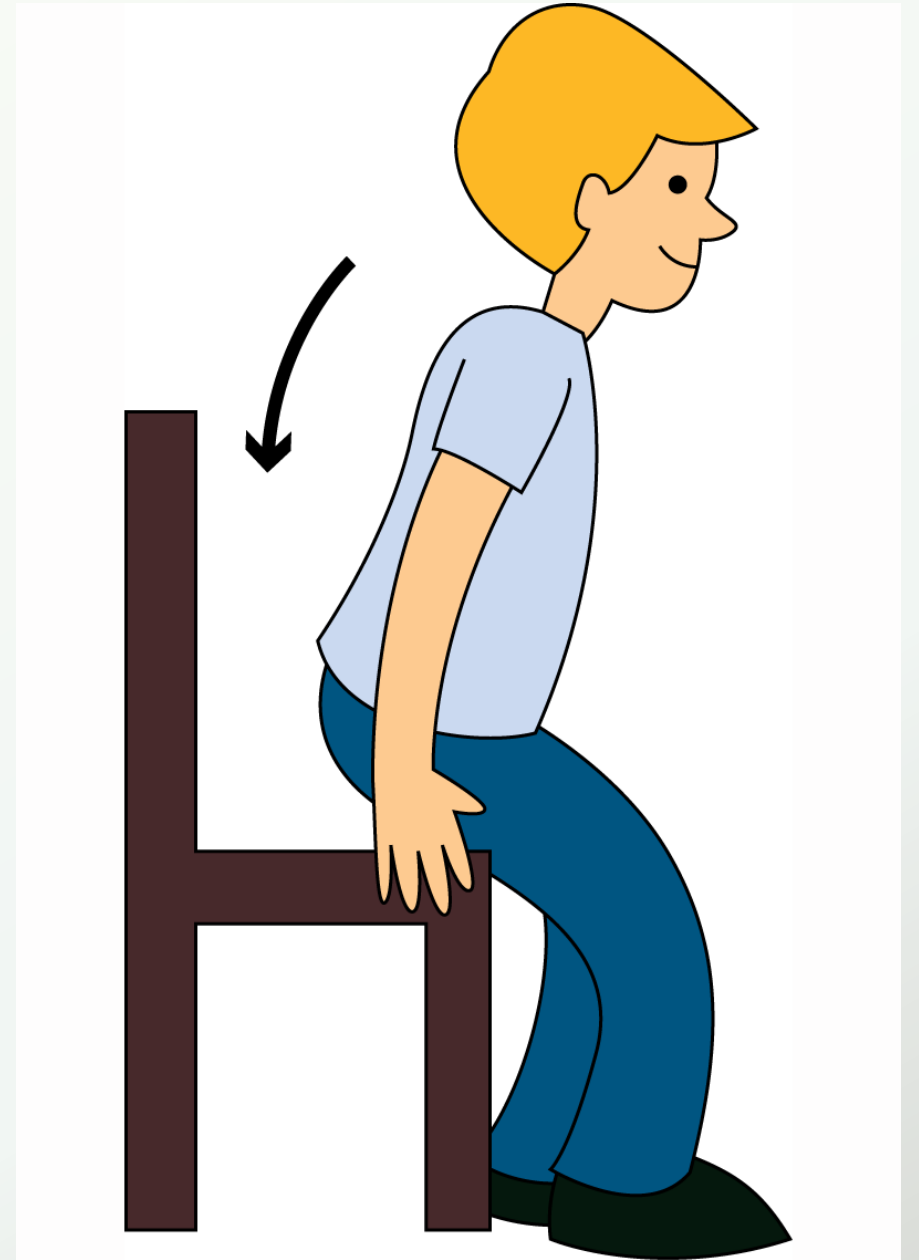
English as a Second Language



Let's play!

- たってください。
- Tatte kudasai

- 座ってください
- Suwatte kudasai



はい、

Hai



いいえ

Iie



はい、

Hai

いいえ

Iie





はい、

Hai

いいえ

Iie

Congrats!
Y'all learnt 4 words
in Japanese today!



お疲れ様です。(otsukare sama
desu)

Family Literacy Services Quick View

ESL and GED Classes for
Parents



Daycare Services offered for
one child



Parent and Child Time

Program Model

Monday-Thursday (4 days/week)

ESL or GED Classes 2 days per week

Support Class 1 day per week

Parent and Child Time 1 day per week

Program Challenges

In person, online, and hybrid classes

Implement new platforms and distance learning program

Family Literacy Services



• PY-2020-2021

English as a Second Language Program Model

- Morning Classes
 - Monday and Wednesday
 - Tuesday and Thursday
 - 9:00am-12:30pm
- Online and Face to Face

- Evening Classes
 - Monday-Wednesday
 - 6:00pm-8:00pm
- Online and Face to Face

Program Challenges



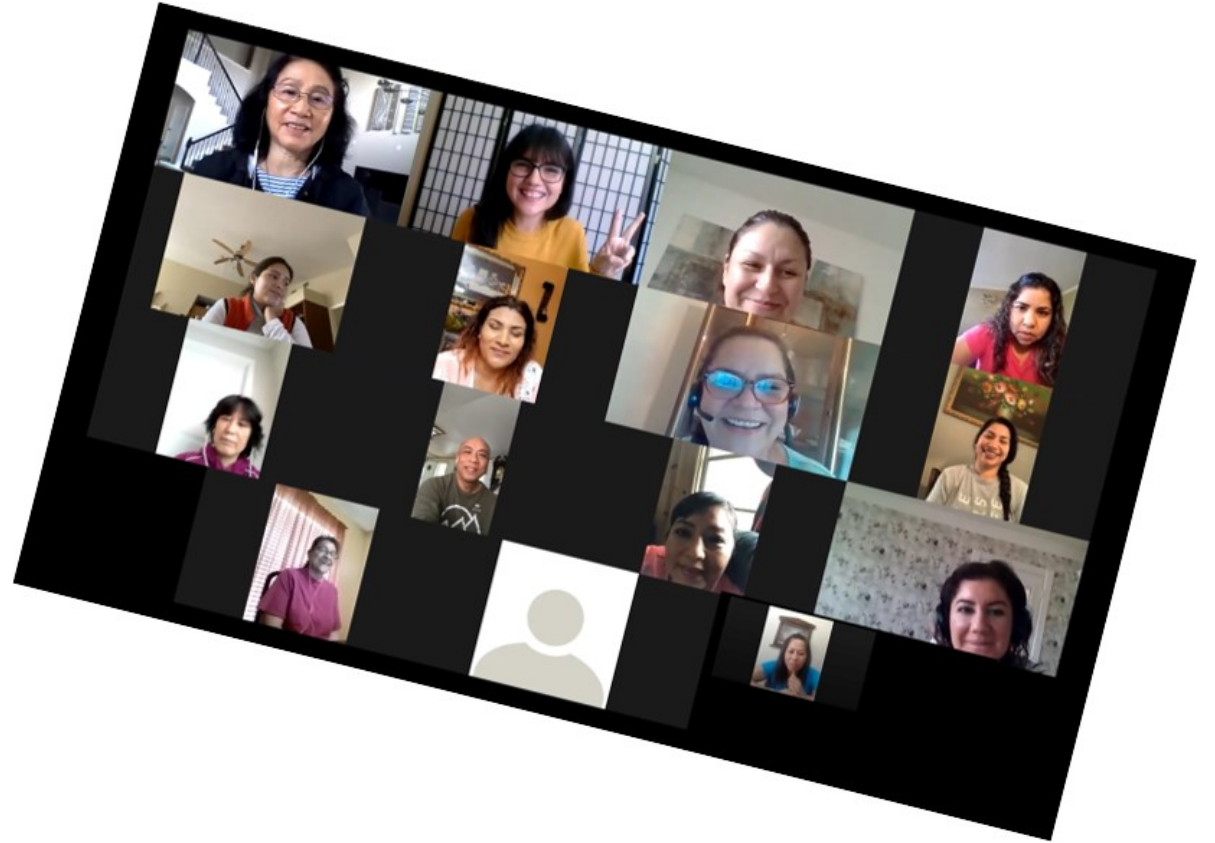
TECHNOLOGY
ISSUES



LENGTH OF CLASS



POST TESTING
ONLINE STUDENTS



ESL Classes



ESL Students 2020-2021



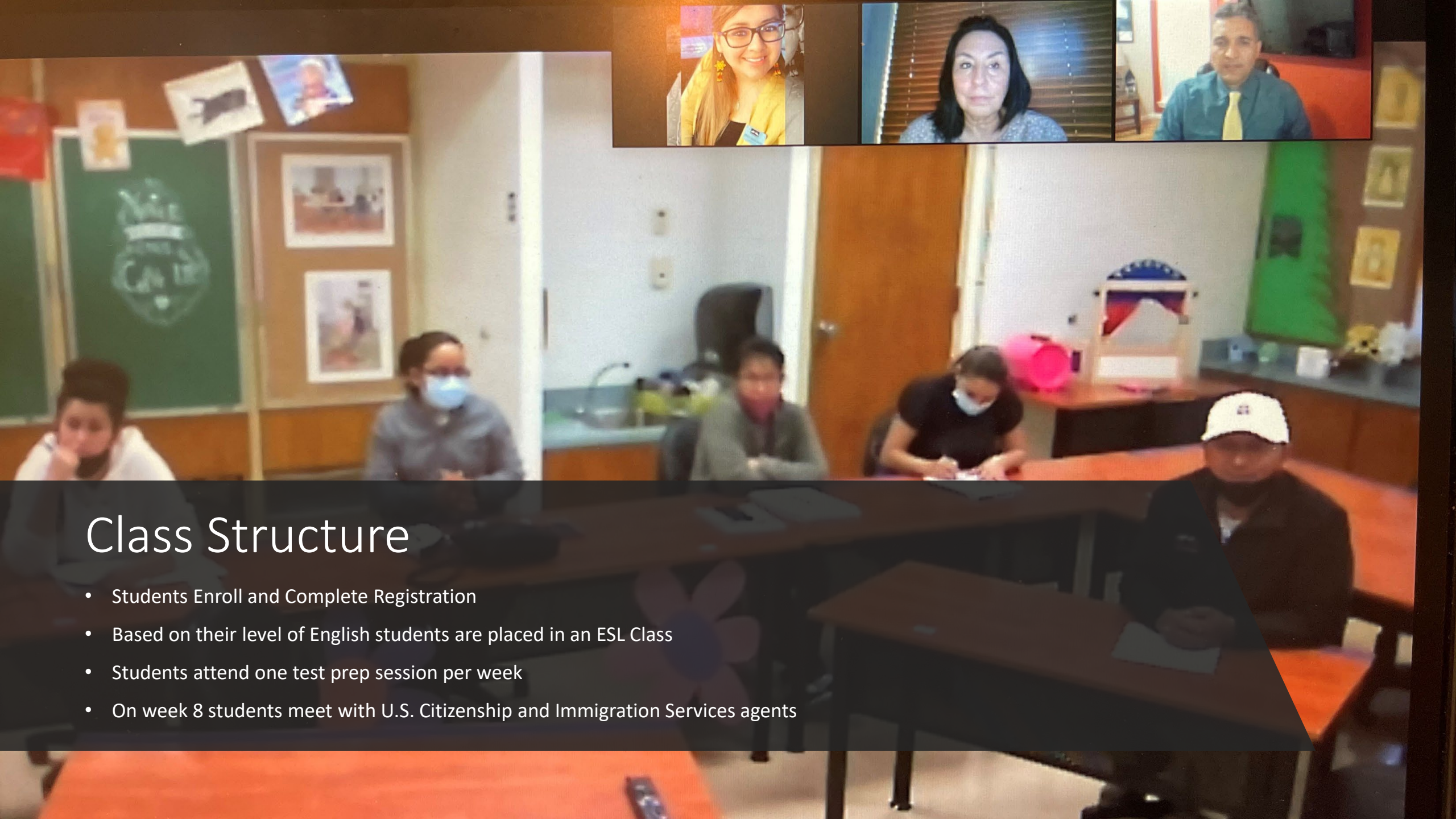
US Citizenship Test Prep Services

Pop Quiz Time!



Citizenship Class Model

- For students that have applied, or they are about to file paperwork
 - 8 weeks of instruction in person
 - Meeting with an USCIS agent
 - Interactive material and civics prep



Class Structure

- Students Enroll and Complete Registration
- Based on their level of English students are placed in an ESL Class
- Students attend one test prep session per week
- On week 8 students meet with U.S. Citizenship and Immigration Services agents

New Citizens

Delia Garcia



Martha Escudero



Business Entrepreneurship

The background features abstract green shapes, including a large semi-circle on the left and a horizontal bar below the title, all in various shades of green.

Entrepreneurial Model

- Class has two components:
 - Entrepreneurship and Business Planning
 - Integrated EL CIV
 - Burlington English
 - Presentation Skills
 - Professional Training
- 12 week Program
 - 2 days per week
 - Day One: Business Planning
 - Day Two: Training
 - 3.5 hours per day

Most Popular Occupations



LANDSCAPING



PHOTOGRAPHY



FOOD INDUSTRY

Program Model Cont.

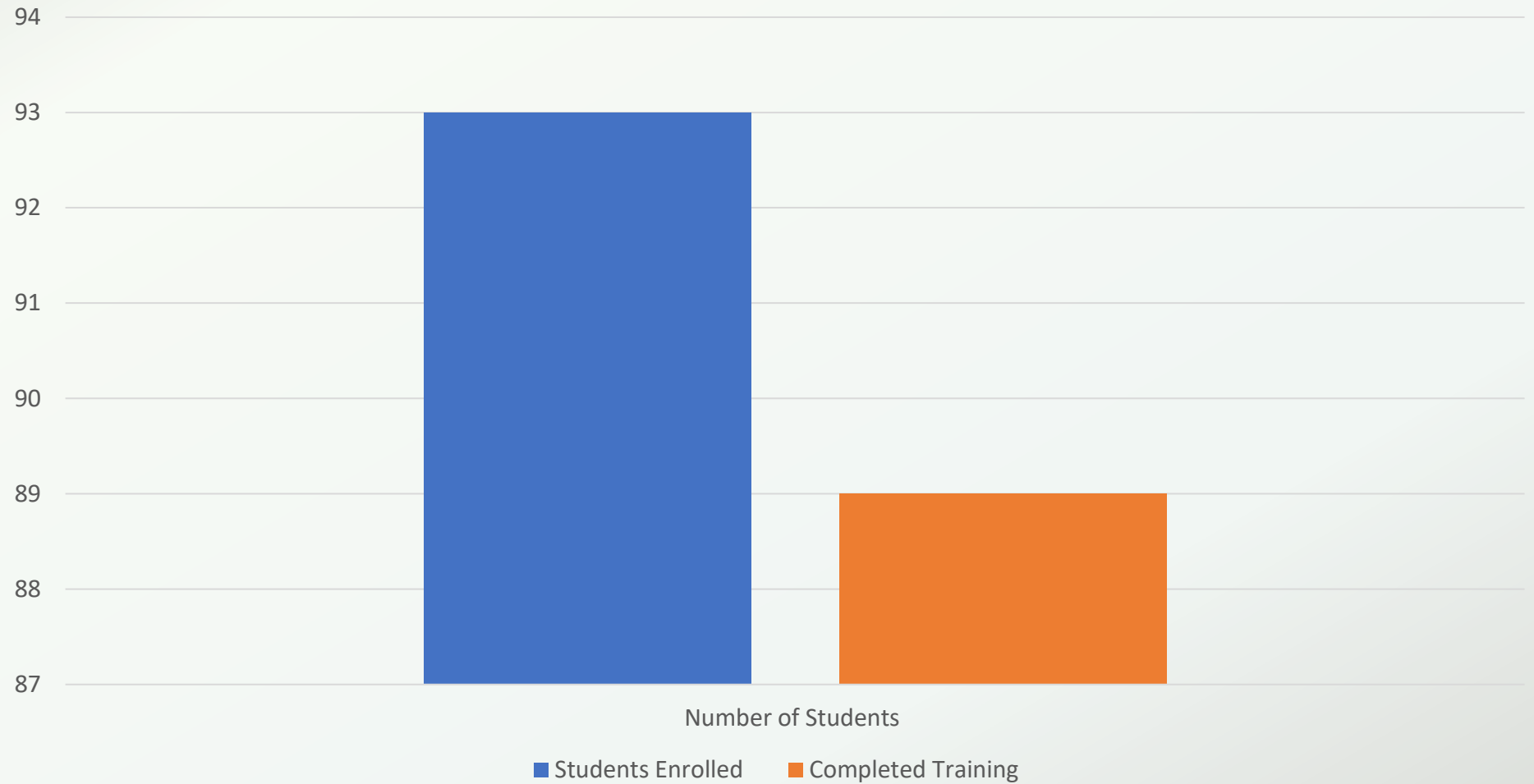
Class is in English

Professional Training is in Spanish

Training Sessions Include:

- Accounting
- Finance
- Human Resources
- Business Law
- Marketing
- Risk and Insurance

Performance for Years 18-19, 19-20, 20-21



Highlights



GED in Spanish

-
- Began April 2021

Why GED in Spanish

- GED Class in Spanish is support for English as a Second Language students
- ESL Students in need of GED for reasons such as:
 - Work
 - Court
 - Immigration

How does it work?

- Students are ESL Students
 - Have qualifying test and are not topped out in English Baseline
 - Have low scores in CASAS typically in 200s
 - Score between 135-140 in OPT in Spanish

Program Model



ESL Class Online

Burlington English Career Exploration



GED Support Class

In Person

In Spanish



Students are placed in ESL Class based on scores from Pre-Test in Clas-e



Students are placed in GED Class based on scores from Practice Tests in Spanish

Program Model Cont.



Class meets 6 hours per
week



Class Meets 2 days in
person, Tuesday and
Thursday



Class works on BE Online ,
Monday and Wednesday

Challenges



NEW PROGRAM



TECHNOLOGY ISSUES

Highlights



Student Success



Four Students have started taking Official
Test and Passed at least one section

Questions?

Maria Araujo-Ponce

Director of English Services

maraujo@lcoTyler.org

903-533-0330

Nury Araya-Burnett

Instructional Coach-English
Services

nburnett@lcoTyler.org

903-533-0330