

TWC AEL Fall Institute: Internationally Trained Professional Educator Career Pathway Guide

Dr. Olga Escamilla, TX A&M PD Center Specialist

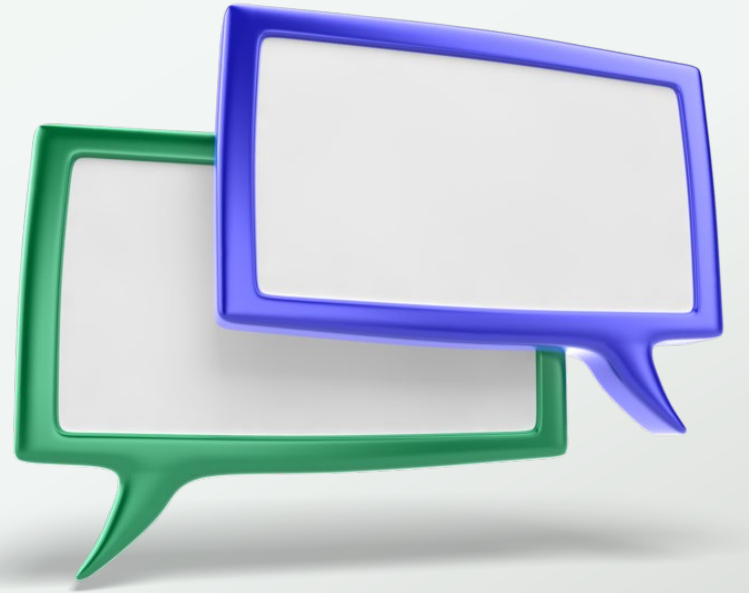
Mauro Hernandez, Region 1 Instructor

Denise Hinojosa-Orand, San Jacinto AE Grants Director

Elizabeth “Liz” Moya, Ysleta Program Coordinator

True or False Icebreaker

Using the chat, indicate True or False for the following statements.



Session Objectives

- Provide project guide historical overview
- Identify the ITP Educator Career Pathway Guide's audience, purpose, and uses
- Summarize the guide's content developed for ITPs
- Illustrate sample components



Selection Process of Cohort Members

- ❑ Individuals interested in the project completed a survey
- ❑ Selection was made based on a multi-step process
- ❑ Invitations were sent to those selected
- ❑ Individuals selected completed a Commitment Form
- ❑ Directors also completed a Commitment Form for those selected, committing to provide support in the effort



PD Project - Cohort Overview

Career Pathways Guide Workgroup

- Leticia Farrera, Austin CC
- Mauro Hernandez, Region 1
- Mechelle Marler, Austin CC
- Louis Martinez, Ysleta Community Center
- Alma Ramon, Region 1
- Kerri Rhodes, Restore Education
- Leticia Sanchez, Region 1
- Delia Watley, Irving ISD



Summary Of Collaboration (Project Timeline)

Career Pathways Guide Workgroup

Feb 2021 - Initial meeting

March 2021 - Meeting to review Project Outline

April 2021 - Held various meetings with members, provided guidance and feedback

May 2021 - Held various meetings and Submitted completed work in progress for Phase I

Barriers that Exist

- Lack of Information and Guidance
- Challenge of Language
- Gaps in Education
- Certification and Exam Challenges
- Foreign Degree Validation Process and Cost
- Lack of Professional Networks
- Employer Bias

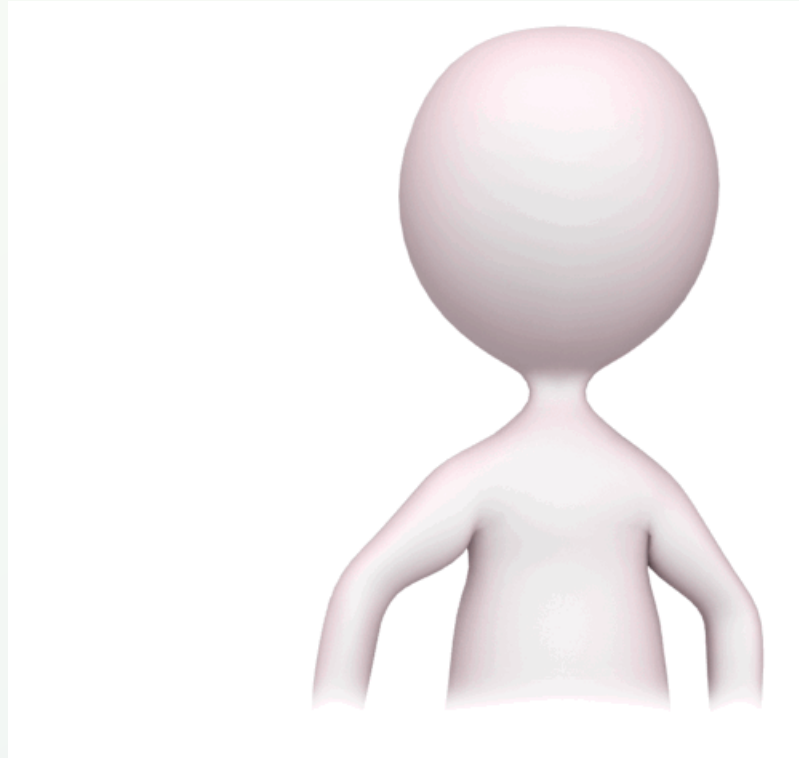


Source: Nguyen, V., Norouzi, R. & Montalto, N. V.. (2015). Reducing Brain Waste: Creating Career Pathways for Foreign- Educated Immigrants in Washington State. Untapped Talent: The Costs of Brain Waste among Highly Skilled Immigrants in the United States1-28.

Internationally Trained Professional's Educator Career Pathway Guide: **Table of Contents**

- English Language Proficiency
- Alternative Certification
- Integrated Education & Training
- Digital Badges
- TOEFL Preparation
- Obtaining Citizenship
- Accredited Evaluation of Transcripts
- Career Pathway Costs

Comprehension Check





ITP Educator's Guide: **Sample Content**

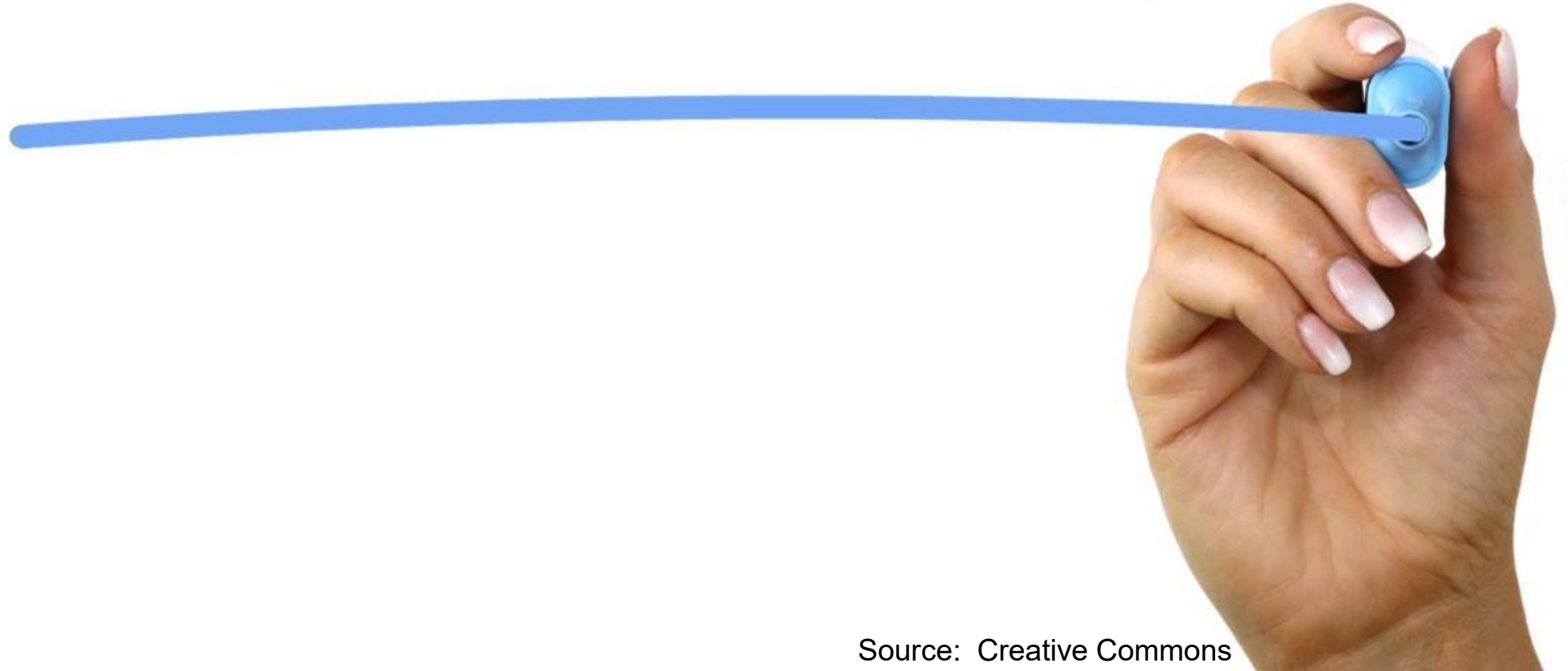
Digital Literacy and Digital Fluency

Alternative Certifications and IETs



YouTube - <https://www.youtube.com/watch?v=N2nHkbj-DvQ>

QUESTIONS



Source: Creative Commons

Available Resources

- TWC AEL Letters
 - 01-17 - Services for ELLs
 - 02-17 - Assessing ELLs
 - 06-15, Change 1 - Expansion of Eligible Population
 - 02-21, Attachment 3 - TEAMS Activity and Funding Codes
- PD Portal Webinars - next slide
- National publications and resources
 - Migration Policy Institute: Leaving Money on the Table: The Persistence of Brain Waste among College-Educated Immigrants
 - IMPRINT - <https://www.imprintproject.org/resources>

ITP Webinar Series in PD Portal



- Internationally Trained Professionals: Addressing Barriers and Opportunities for Upward Mobility
- Advanced English Language Proficiency: Launchpad to ITP Workforce Integration
- Digital Literacy to Digital Fluency: Working with ITP Students to Develop the Skills They Need to Succeed
- How to Fit In American Culture: Leveraging Social Capital in the American Workplace
- ITP Educator Career Pathway Guide

References

- Images not otherwise noted from Presenter Media
- Migration Policy Institute -
<https://www.migrationpolicy.org/research/brain-waste-college-educated-immigrants>
- Nguyen, V., Norouzi, R. & Montalto, N. V.. (2015).
Reducing Brain Waste: Creating Career Pathways for Foreign- Educated Immigrants in Washington State.
Untapped Talent: The Costs of Brain Waste among Highly Skilled Immigrants in the United States 1-28.