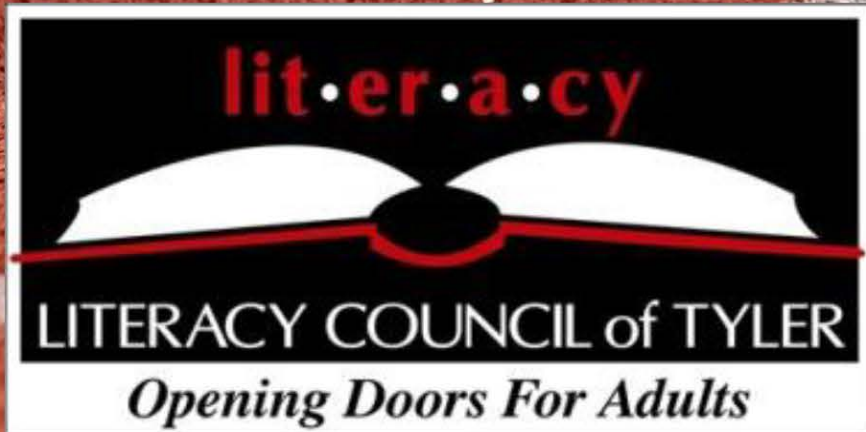



# On the Fast Track to Getting an HSE



Mary Springer, Director of HSE Services  
Ashley Arreola, HSE Instructional Coach





Would you  
like to help  
your  
students get  
their HSE  
completed  
faster?

Photo by [Braden Collum](#) on [Unsplash](#)



Would you like  
to acquire HSE's  
from students  
who leave your  
program early or  
skip it all  
together?

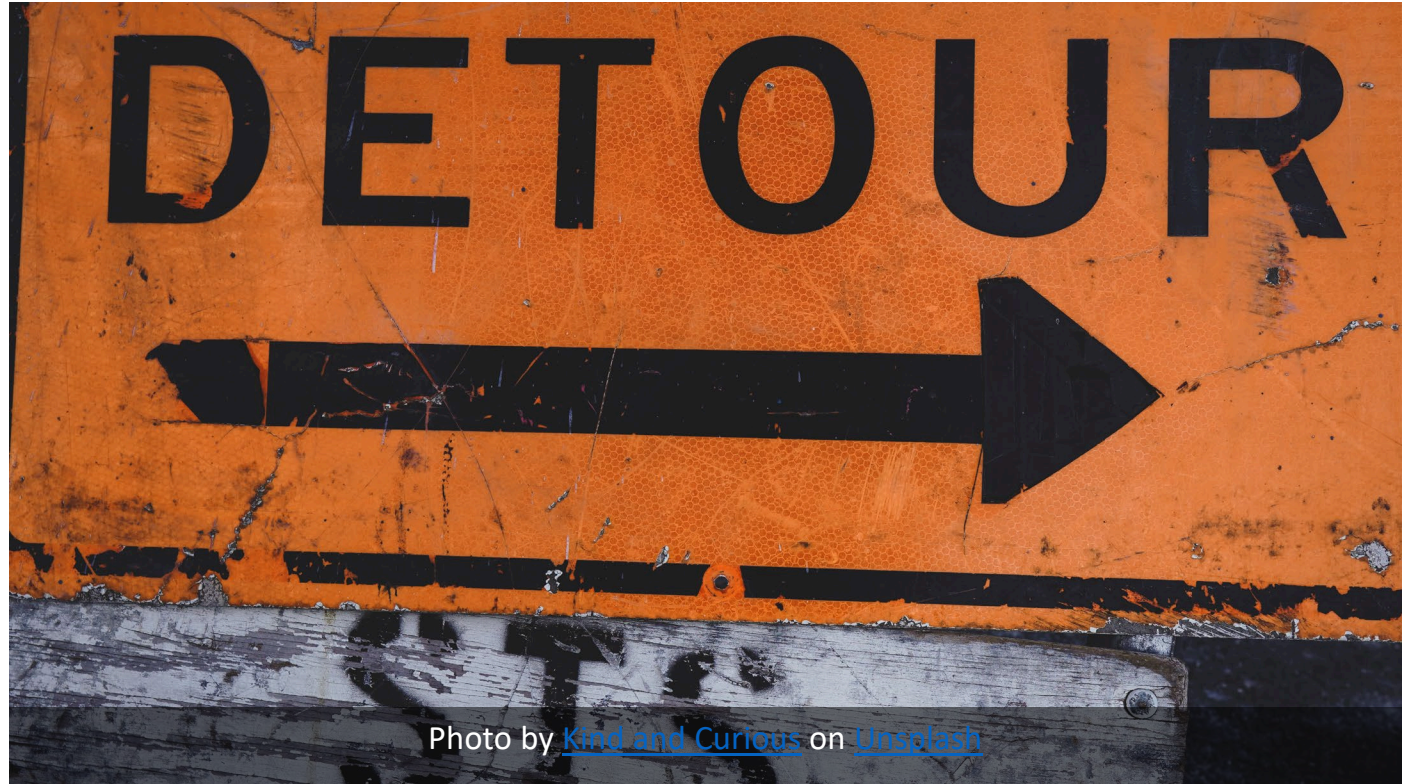
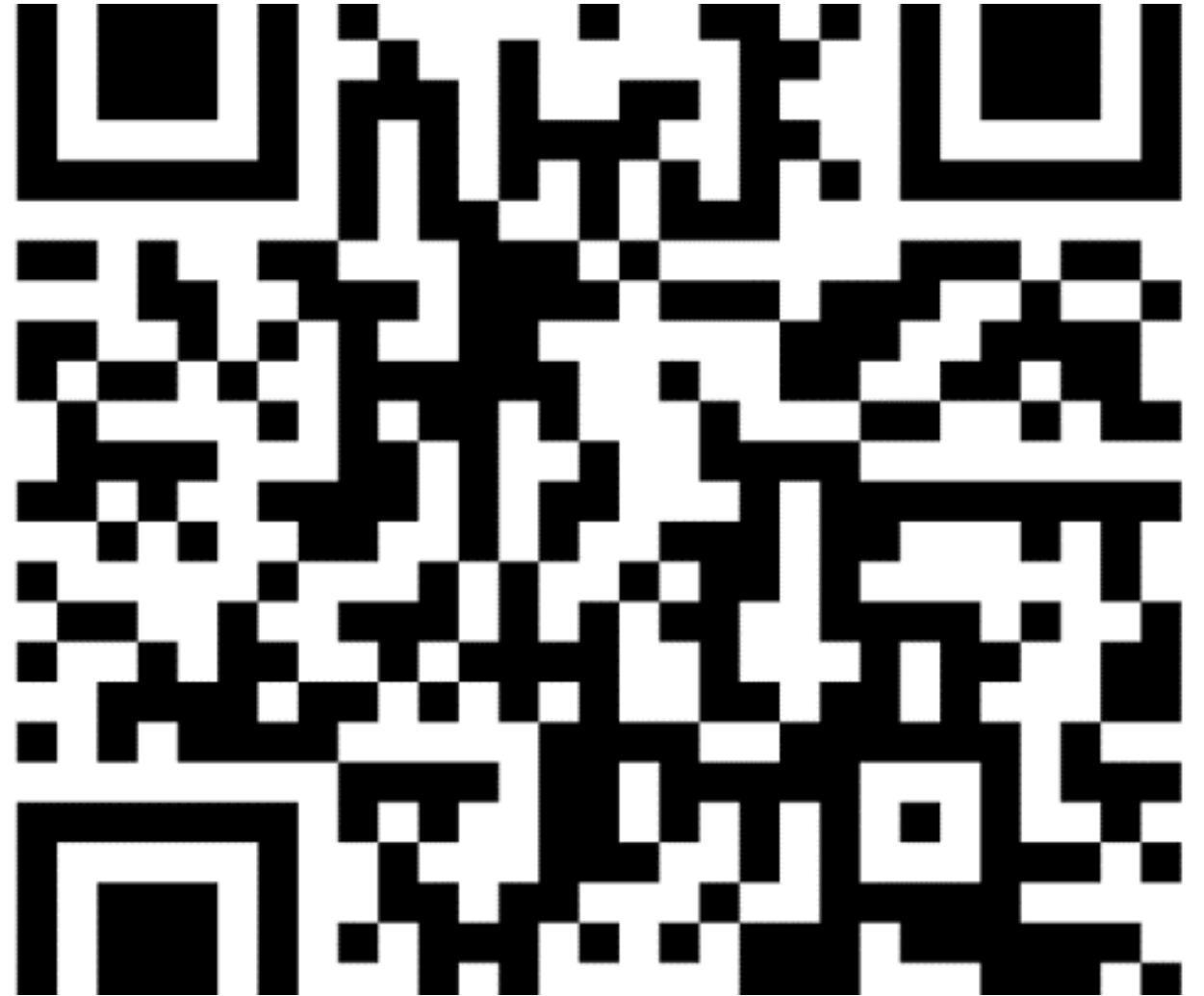


Photo by [Kind and Curious](#) on [Unsplash](#)



Why do higher level students leave your program or skip it all together?

Follow the QR code to [padlet.com](https://padlet.com) and leave your response.







# Taylor Tracey Record Breaker





# Taylor Tracey Record Breaker

- Orientation 12/07/2020
- First Direct Hour 12/09/2020
- GED Complete 12/15/2020
- First Day of College 01/11/2021





# Objectives

01

Identify and target  
Fast Track  
candidates

02

Follow a roadmap  
to increase HSE  
completions

03

Utilize new  
strategies for  
completing HSE's  
in record time



# Our Fast-Track Evolution

Fast Track Class- 8-week intensive class, teaches key concepts for each subjects

Virtual Fast Track with the addition of Zoom Class and Zoom Lab

Feb. 2018

Apr. 2019

Apr. 2020

Jan. 2021

Fast Track Program:  
Students work independently with teacher oversight

TWC Vouchers available, so what's our carrot?



# Identifying Students

---

Identify and Target Fast Track Candidates



# Identifying Students: Assessments

1. ASE level students are our target
2. Fast Track- ASE in both reading and math
3. Fast Track + Math- ASE high in Reading, ABE High in Math

CASAS GOALS Functioning levels			
TEAMS Functioning Level	Approximate Grade Level by EFL (Not for use in TEAMS)	Reading Score	Math Score
High Adv. ASE Level 6	11 - 12	249 and above	236 and above
Low Adv. ASE Level 5	9 - 10	239-248	226-235
High Inter. ABE Level 4	6 - 8	228-238	215-225
Low Inter. ABE Level 3	4 - 5	217-227	204-214
Beginning Basic Level 2	2 - 3	204-216	194-203
Beginning Lit. Level 1	K - 1	203 and below	193 and below



# Identifying Students: Self- Identification

“I just want to sign up for the test”

Or “I know I’m ready”



# Identifying Students: Promote Your Program

Don't know if you're  
ready to take the  
GED?

Let the Literacy  
Council of Tyler's Fast  
Track Program help  
you out.

You will receive  
these FREE  
resources  
because you  
are a student  
with the  
Literacy Council  
of Tyler

- ✓ Personal Online Math Tutor with student Nest (MACC)
- ✓ Option for Online Classes
- ✓ Option for In Person Classes
- ✓ Free Access to GED Flash
- ✓ Free GED Practice Test
- ✓ Free GED Test
- ✓ Many online resources that will be personized to your academic needs!





# Identifying Students: GED Manager

Review Handout Number

## Statistics

### Your student news

You have 475 students interested in your prep center  
281 students are enrolled in your center

Expressed Interest	Enrolled
475	281

[Click here to search enrollment information](#)  
[Click here to search testing activity](#)

# Identifying Students: Update Status

- Interested
- Enrolled
- Contacted
- Credentialed
- Dismissed

Handout # *(email example)*

## Update GED® Prep Student Enrollment Status

Student: Mary Springer  
Current Status: Enrolled

Update Status ▾

Notes:

GED Supervisor's student account

Cancel

Confirm

# Getting Started

---

Follow a Roadmap to  
Increase HSE Completions





## Fast Track Model

After Enrollment we MUST get  
12 hours from the student  
before they are GED complete

# Fast Track Model - Start

Click to add text

Start with Goal  
Setting, GED.com  
account & free  
practice questions

Goal Setting

## Fast Track Model - > 4 hrs

Start taking  
Official GED practice  
tests after 4 hours

Goal Setting

Practice Tests (after 4 hrs)



# Fast Track Model – What's Next?

What's after the  
GED?

- College Transition
- Career Exploration
- Career Pathways

Goal Setting

Practice Tests (after 4 hrs)

Career Counseling/ College  
Transition

# Fast Track Model - > 8 hrs

- Start taking actual tests after 8 hours
- We hold the final voucher until they have completed 12 direct hours

Click to add text

Goal Setting

Practice Tests (after 4 hrs)

Career Counseling/ College  
Transition

Actual Tests (after 8 hrs)

# Modified Fast Track

## Fast Track + Math

Follow same steps as Fast Track,  
but only with 3 reading-based  
subjects

Once student has completed  
RLA, Sci and SS then focus on  
math

Utilize Student Nest

Math Tutor

Math only class



# Modified Fast Track

Low  
ASE/ High  
ABE (NRS 4-5)

Place in a class

Follow Fast Track steps one subject at a time

Provide lessons on items they need to work on (outside of class at their own pace)

Teachers can use this information to determine their class lessons

Focus instruction on High Impact Indicators



# Student Success



How do you  
respond to  
change?

A photograph of a person in a starting crouch on a red running track. The person is wearing a light blue tank top, dark blue shorts with a bright green stripe, white socks, and grey sneakers with green laces. Their hands are on the ground, and their body is low to the ground, ready to start a race. The background is a blurred red track with white lane lines.

"ALL CHANGE IS  
HARD AT FIRST,  
MESSY IN THE MIDDLE  
AND GORGEOUS  
AT THE END."

*Robin*

# New Strategies



- Enrollment
- Zoom Lab
- Onsite Online Testing
- TWC Vouchers



# Enrollment



Changed Enrollment  
Order



Day 1- Orientation



Day 2- Appraisals &  
1st Assessment



Day 3- 2nd  
Assessment and  
Paperwork.

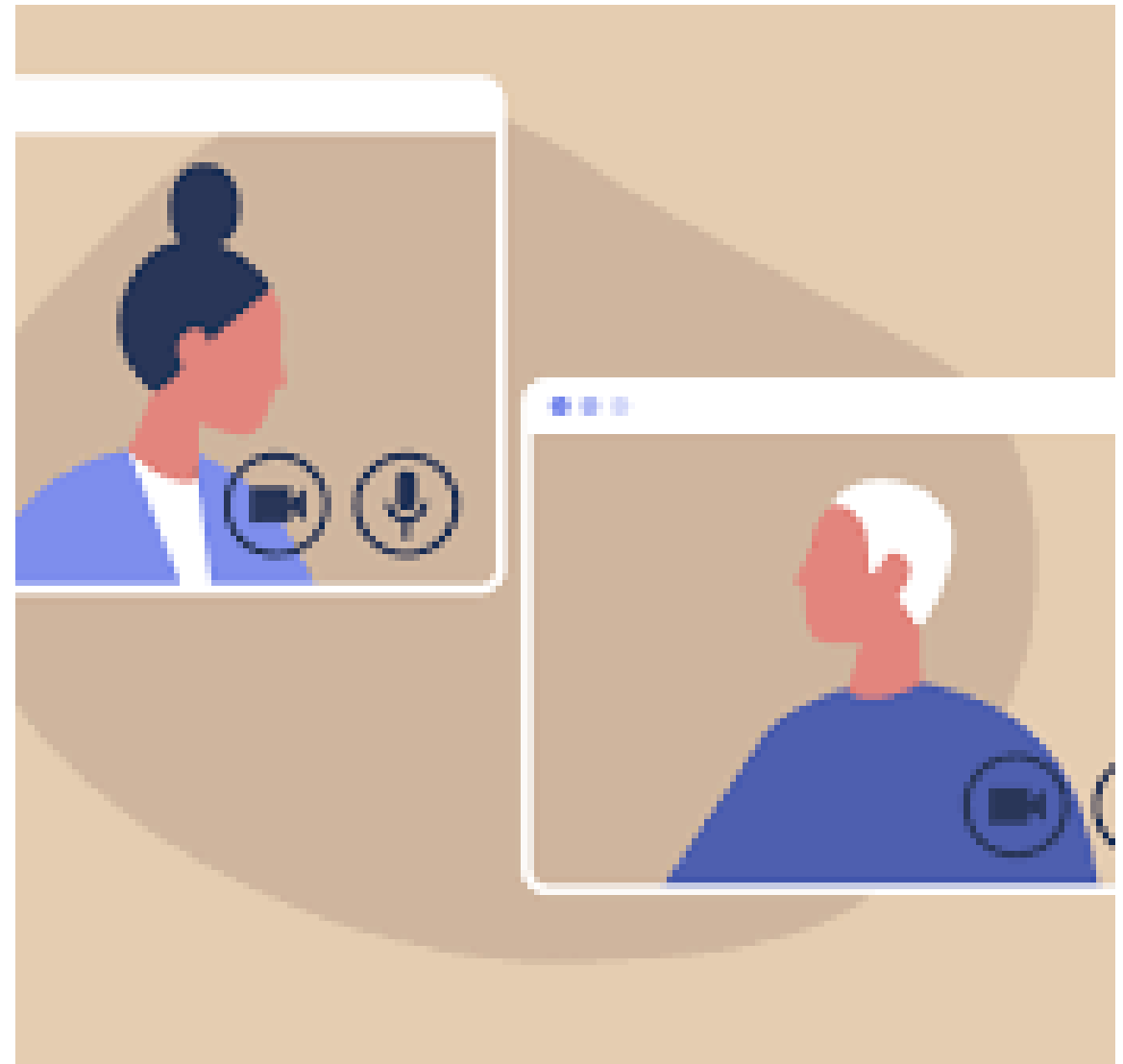


Day 3 counts as direct  
hours

# Zoom Lab

---

Virtual computer lab allows students to connect with staff from home to work on assignments, lessons & practice tests.



# Onsite Online Testing

GED testing room for students

- Provides equipment & internet
- Expands testing hours
- Capture direct hours before & after the test



# TWC Vouchers



- Pay for students' HSE test with TWC vouchers
- Ready with a program that helps them finish quickly



Coming Soon  
to Our  
Program

## **Scope and Sequence**

1. Curriculum Outline
2. HSE Instructional outline
3. ABE Instructional outline
4. Essential Education



# Objective Review

---

- Identify and target Fast Track candidates
- Follow a roadmap to increase HSE completions
- Utilize new strategies for completing HSE's in record time



# Questions

Mary Springer  
[mspringer@lcotyler.org](mailto:mspringer@lcotyler.org)